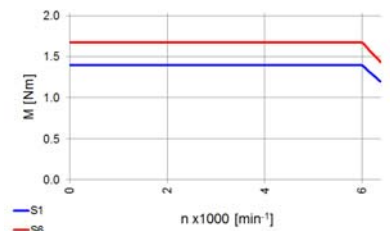
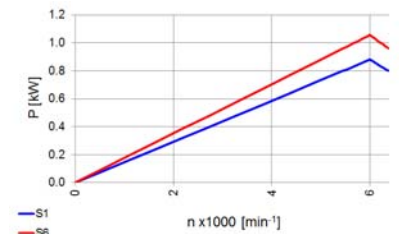
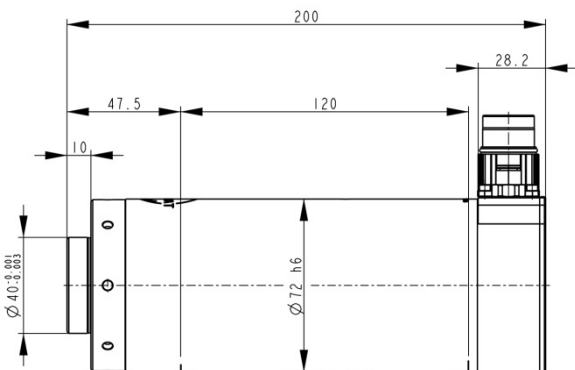


**MMO-72 D40/7** | **Ø72**  
**Art. N° 376-37-00**



### Spindle data

Mounting type	Clamping ; Ø 72 h6
Body length	200 mm
Front bearing	2 steel bearings
Rear bearing	2 steel bearings
Lubrication of bearings	Grease
Rotation	CW / CCW
Air-seal requirement	0.8 bar
Tool interface	Ø40 - 0.001/-0.003
Mounting	Horizontal and vertical
Cooling	Air cooled

### Motor data

	S1	S6	
Max. speed	7000	7000	Min <sup>-1</sup>
Frequency	233	233	Hz
Voltage	350	350	V
Amperage	2.7	3.4	A
Power	900	1'100	W
Torque	1.6	2	Nm